



LAMB & CO

Call us on 01255 422 240
Inspired by **property**, driven by **passion**.



ABBEY CRESCENT, THORPE-LE-SOKEN, CO16 0LH

£2,350 PCM

Lamb and Co are pleased to advertise this three/four bedroom detached bungalow, was refurbished less than a year ago. This property is situated in the sought after village of Thorpe- Le Soken, which gives you a selection of local amenities, just a short walk away. This property is available from the middle of August.

Contact the office to express interest.

- Available Mid August
- Guarantor Required
- Parking for Multiple Vehicles
- Three/Four Bedrooms
- No Pets/ No Smokers
- Council Tax Band- C
- En-Suite & Dressing Area to Master
- EPC- C

Accommodation comprises with approximate room sizes as follows:

Entrance door to:

Entrance Hallway



Snug/Bedroom

15' x 11'1 (4.57m x 3.38m)



Bedroom

15' x 11' (4.57m x 3.35m)



Bedroom

11' x 9'3 (3.35m x 2.82m)

Master Bedroom

11'8 x 11' (3.56m x 3.35m)



Dressing Area

8'2 x 5'5 (2.49m x 1.65m)



En-Suite

8'2 x 5'3 (2.49m x 1.60m)



Bathroom

9' x 6'8 (2.74m x 2.03m)



Open Plan Living/Kitchen/Dining

25'4 x 18' (7.72m x 5.49m)



Kitchen Area



Living Area

Utility Room

9' x 5' (2.74m x 1.52m)

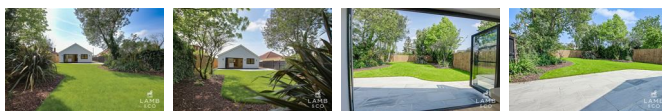


Front Of Property



Outside Rear

60' x 40' (18.29m x 12.19m)



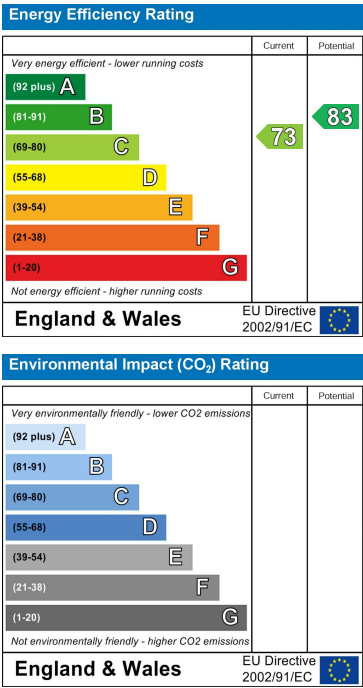
Agent Lettings Notes

PLEASE NOTE - All of our rental properties require 1 full months rent security deposit and 1 full months rent in advance. From this amount we require 1 weeks rent to be paid up front as a holding deposit to process your application.

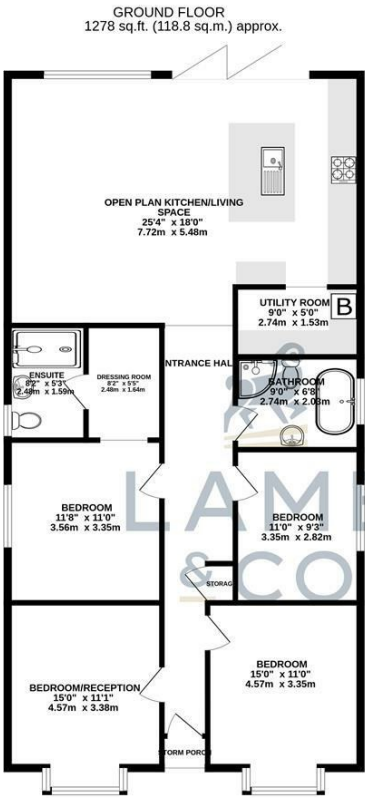
Map



EPC Graphs



Floorplan



These particulars, whilst believed to be accurate are set out as a general outline only for guidance and do not constitute any part of an offer or contract. Intending purchasers should not rely on them as statements of representation of fact, but must satisfy themselves by inspection or otherwise as to their accuracy. No person in this firms employment has the authority to make or give any representation or warranty in respect of the property.